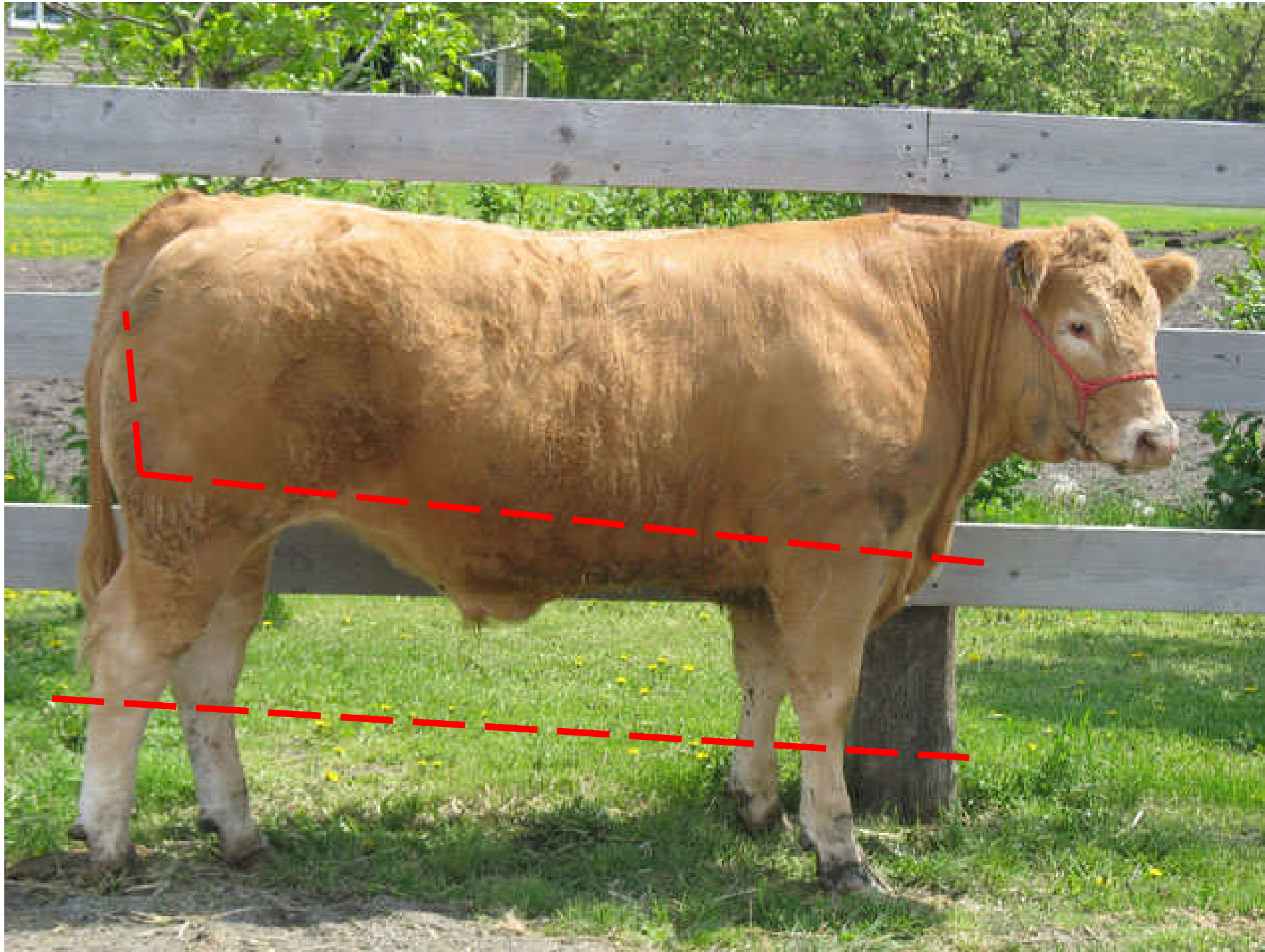


JASPERS (TREBURLEY) LTD

CATTLE CLIPPING REQUIREMENTS



The area between the two red lines should be clean before slaughter; if it is not then it may need clipping.

Areas outside of the red lines do not necessarily need to be clean/clipped.

Key areas that are of particular importance when clipping include:

- Brisket
- Hocks
- Belly